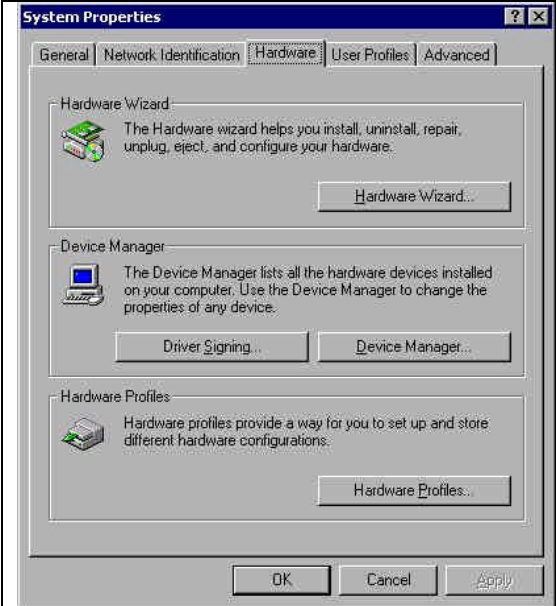

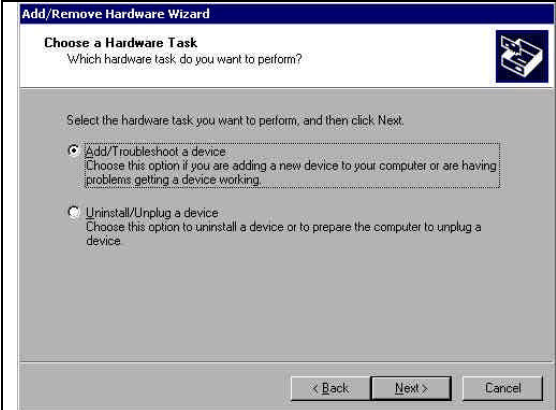

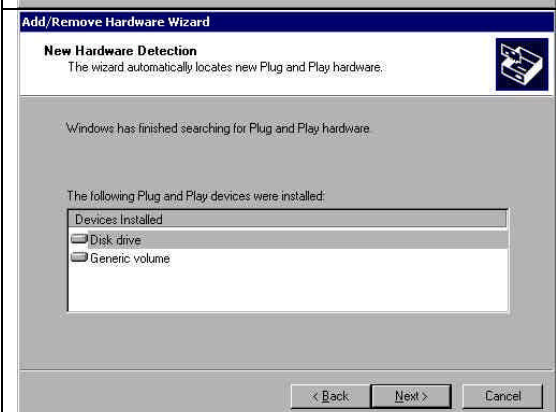



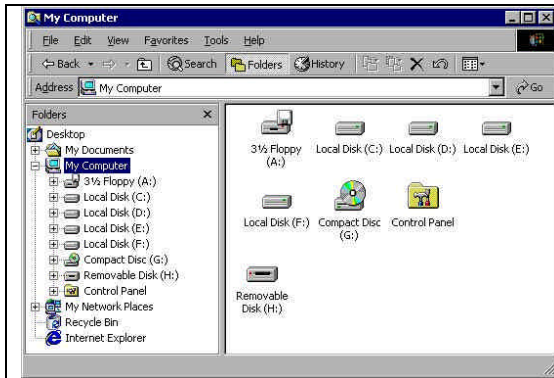
IDE Card Reader Install Manual

1. Install IDE Card Reader under the Windows 2000 Professional and Windows 2000 Advanced Server.

- 1). Make sure you have a free IDE slot.
- 2). Connect IDE Card Reader to IDE slot.
- 3). Start Computer and into Windows.
- 4). Plug in a CF card to IDE reader.
- 5). System setup for add disk drive.

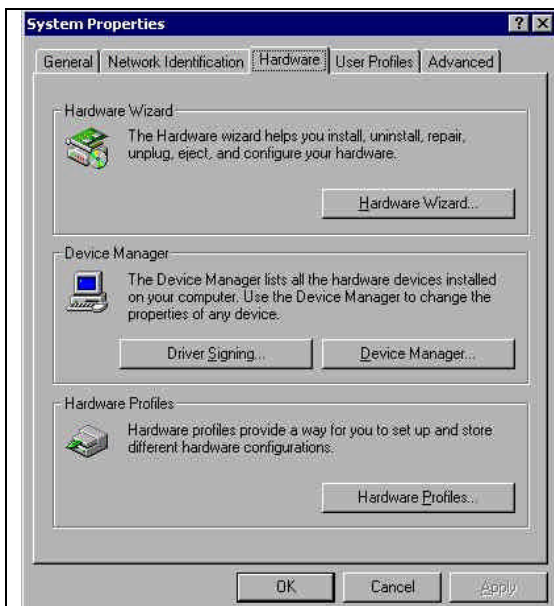
 <p>The screenshot shows the 'System Properties' dialog box with the 'Hardware' tab selected. It contains three sections: 'Hardware Wizard' with a 'Hardware Wizard...' button, 'Device Manager' with 'Driver Signing...' and 'Device Manager...' buttons, and 'Hardware Profiles' with a 'Hardware Profiles...' button. At the bottom are 'OK', 'Cancel', and 'Apply' buttons.</p>	<ol style="list-style-type: none">1. Click mouse right key "My Computer", click "Properties" item.2. Click "Hardware".3. Click "Hardware Wizard".
 <p>The screenshot shows the 'Add/Remove Hardware Wizard' dialog box. It has a blue background with a circuit pattern. The text reads: 'Welcome to the Add/Remove Hardware Wizard. This wizard helps you add, remove, unplug, and troubleshoot your hardware. To continue, click Next.' At the bottom are 'Back', 'Next >', and 'Cancel' buttons.</p>	<ol style="list-style-type: none">4. Click "Next"

	<p>5. Select “Add/Troubleshoot a device”.</p> <p>6. Click “Next”.</p>
	<p>7. System will take a few minutes to search new hardware</p>
	<p>8. Click “Next”</p>
	<p>9. Click “Finish”. Complete setup.</p>



10. New disk drive icon added in “My Computer” now.

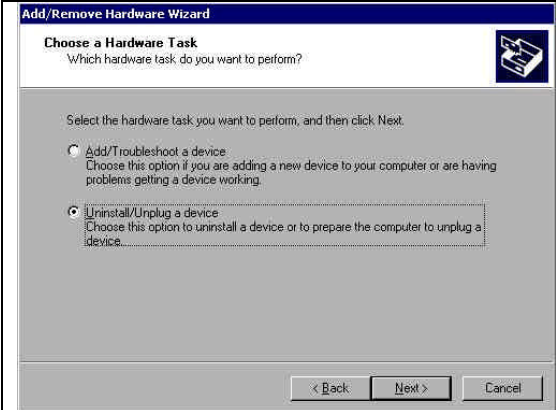
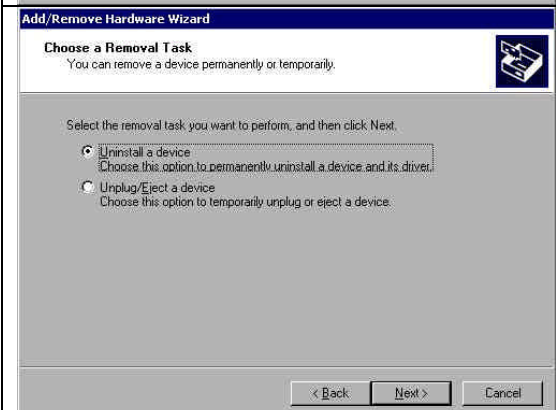
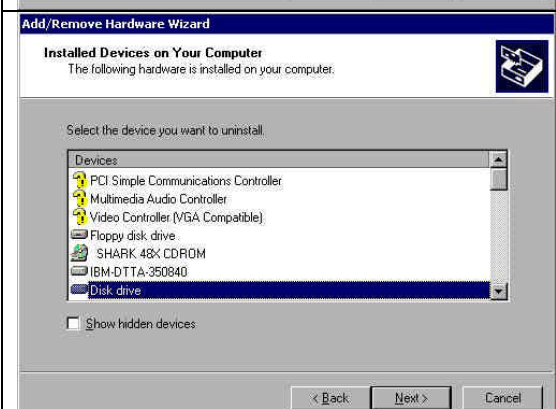
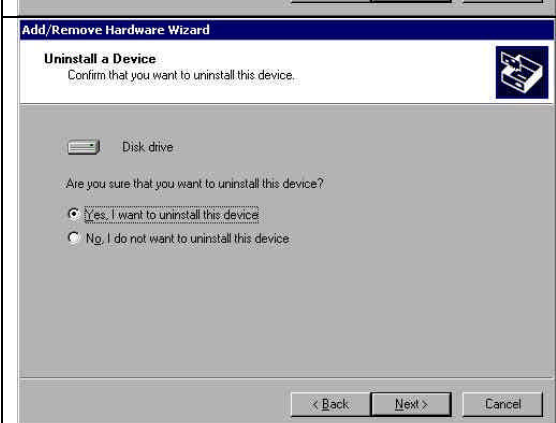
6).System setup for remove disk drive.


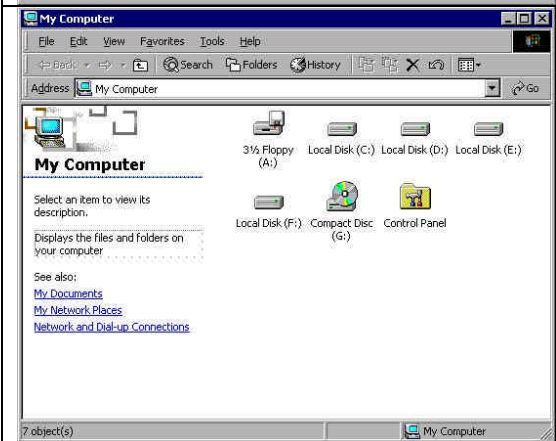


1. Click mouse right key “My Computer”, click “Properties”.
2. Click “Hardware”.
3. Click “Hardware Wizard”.



4. Click “Next”.

	<p>5. Select “Uninstall/Unplug a device”</p> <p>6. Click “Next”.</p>
	<p>7. Select “Uninstall a device”.</p> <p>8. Click “Next”.</p>
	<p>9. Select “Disk drive”.</p> <p>10. Click “Next”.</p>
	<p>11. Select “Yes, I want to uninstall device”.</p> <p>12. Click “Next”.</p>

	<p>13. Click “Finish”.</p> <p>14. Complete removed disk drive.</p>
	<p>15. The added new disk drive icon removed in “My Computer” now.</p>

2. Install IDE Card Reader under the WindowsXP Professional and WindowsXP Home Edition.

The install way Consult Windows2000’s install way, please.