

STRATOS CF PowerMonster II Use`s Manual

This card is suitable for converting CF memory card to 2.5inc note SCSI interface.

This is the precision part, so you should take carefully and must read this manual with good understanding, in order to use this card correctly.

This is sensitive to static electricity. You must handle away from it.

If you had a defective card, we exchange it.

Escape clause:

---Committing a mistake or an irregular action.

---Broken from disaster.

---Dropping down or sinking under water.

---Failure with misunderstanding this manual
discription.

If you have a question, please mail to us:

support@artmix.com

A Specific Limitation

This item converts PIO-4, MultiWord DMA mode 2, UltraDMA mode 2 CF memory card to SCSI-3 (upper compatible). The limitation of memory volume is 128GB max. Type I/II CF memory card only. This card is not available for Network or modem card.

This card does not have function of HOT SWAP; which means exchange for another card in turning on the power.

For ordinary 3.5inc desktop SCSI (2.54mm pitch 50pin interface), you must select STRATOS CF AztecMonster or apply optional 2.5inc to 3.5inc SCSI adapter.

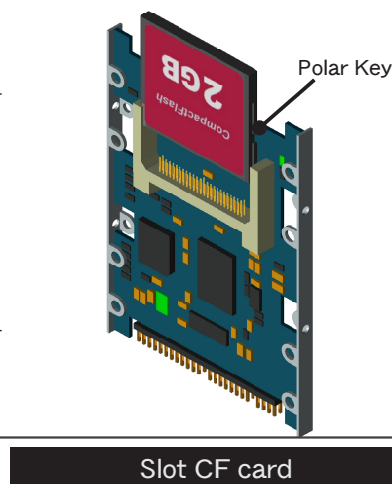
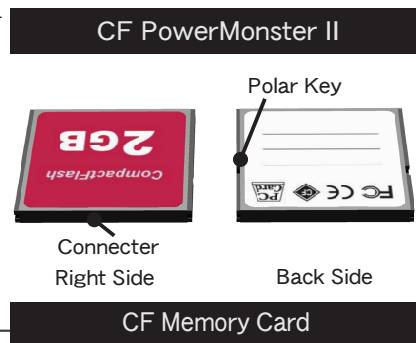
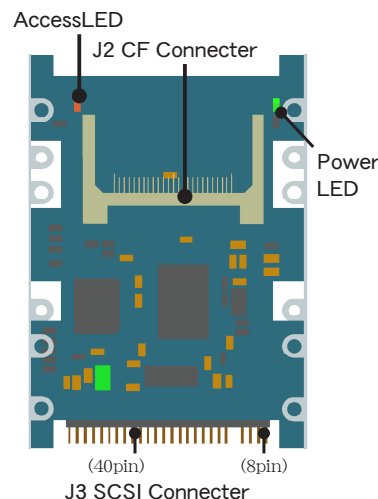
Set Up CF Memory Card

Setting up must be taken care of static electricity and be made sure of power shutting off.

J2 is CF memory card connector. CF card must slot back side down, polar key side is down. Do not insert wrong direction.

Internal Active Terminator

This card has a internal active terminator. Please connect this card to the internal SCSI or the end of SCSI daisy chain. If you want to cancel terminator, please refer to 2.5" SCSI pin assign (pin4 /TRM OFF)



Connect SCSI Interface

You must make sure of all power shutting off. Connect this card to 2.5inc SCSI interface as parts implementation side is up, polar key of conncter is up. DO NOT connect wrong direction carefully. It must be cause of electricity failure.

You make use of access LED with external HDD case or optional 2.5inc to 3.5inc SCSI adapter. Refer to the pin assign of J3 connector, pin 8 LED cathode.

About Mac OS

Generally, Macintosh OS requires formatting software, FWB HDT, Silverlining, or Drive7, to initialize 3rd party SCSI HD. (No available for Drive Setup by Apple Computer.) It is important that HD format has applicablity to Mac OS version.

Caused by the specification of Mac OS, HDD volume may have limit, for example 2G limit on Mac OS 7.1 or 4G limit on Mac OS 7.5. In case, apply formatting software to partition drive. In detail, refer to the software manual.

About MacPlus

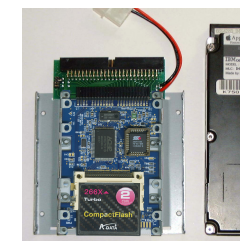
Mac Plus does not boot from this card normally. You must cut #29pin RST function from flat cable. CF card volume is recommended under 2GB.

About AKAI sampler

AKAI sampler, such as MPC60 w/SCSI interface, may behave unusually. It must cause of old SCSI interface chip. Then you should cancel active terminator and add external terminator if you needed. About the function of terminator off, please refer to 2.5" SCSI pin assign (pin 4 /TRM OFF).



Example (PowerBook100)



Hard Disk and CF card is not included

2.5"-3.5" SCSI adapter

[illegible]

2.5 inc note SCSI pin assign

	Specification
CF Device	Type I/II CF memory card
Host Interface	UltraSCSI-3
Size	98(D)x 70(W)x 7.4(H)mm
Weight	About 40 g
Regular Temp.	0 ~ 40 °C
Regular Most.	20 ~ 80%RH
Power Vol.	DC +5V. +/-5%
Power Current	300mA (no CF memory)
Accessory	M3 Screws